

Symphony #1

Movement 1: 1-1 Good Day

66 BPM

pizz.
mf

9
17
25
30

1-2 its fixed

15
mp
28

1-3 (in the) rumblings

mf

9

1-4 Joy (finds you)

Musical score for '1-4 Joy (finds you)' in bass clef, common time. The piece consists of four staves of music. The first staff starts with a melodic line of eighth notes, each with a fermata. The second staff begins at measure 9 with a dynamic marking of *mf* and continues the melodic line. The third staff begins at measure 19 with a dynamic marking of *f*. The fourth staff begins at measure 28 and ends with a double bar line.

1-5 (there are) Campfires burning

Musical score for '1-5 (there are) Campfires burning' in bass clef, 3/4 time. The piece consists of four staves of music. The first staff starts with a melodic line of quarter notes. The second staff begins at measure 8. The third staff begins at measure 14. The fourth staff begins at measure 20 and ends with a double bar line.

1-6 (so stay) afloat

Musical score for '1-6 (so stay) afloat' in bass clef, 6/8 time. The piece consists of four staves of music. The first staff starts with a melodic line of half notes, with a dynamic marking of *mp*. The second staff begins at measure 22 with a dynamic marking of *mf* and includes a *pizz.* instruction. The third staff begins at measure 30. The fourth staff begins at measure 38 with an *arco* instruction and ends with a double bar line.

1-7 the adventures of

pizz.

f

5

9

17 *mf*

25

33 *f*

41 *mf*

49 7

57 *mf*

61 *f*

65

73

77



81

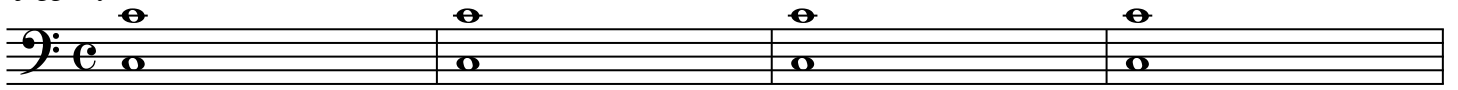


85



1-8 (are) taking its toll

jaggedly bowed



f

